

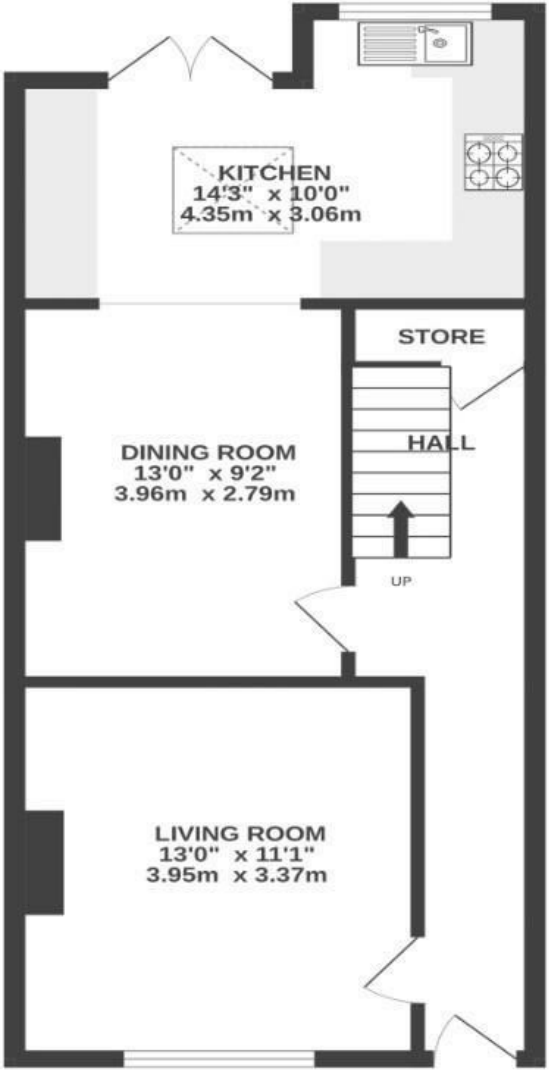
Lyppiatt Road

REDFIELD

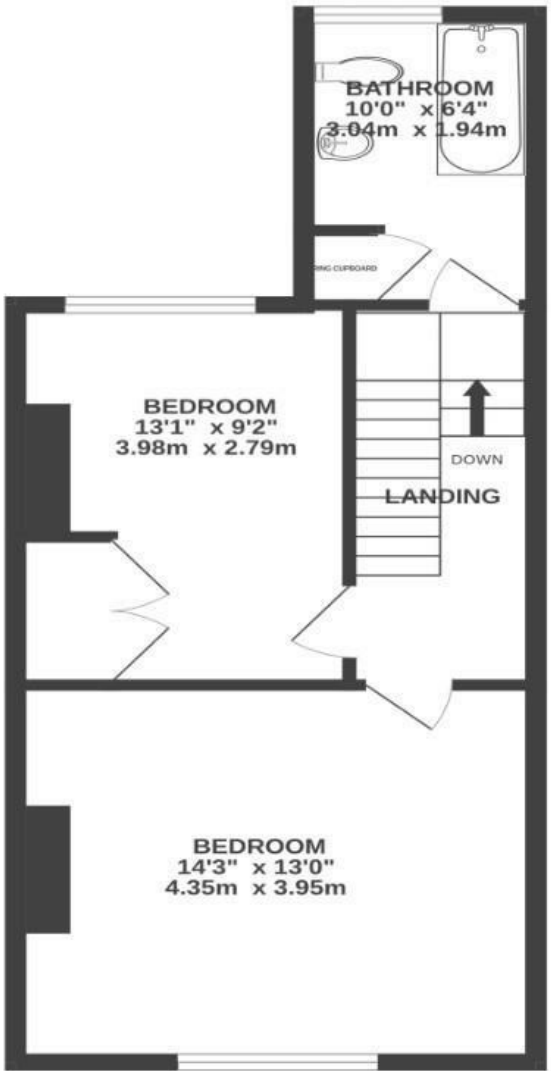
APPROXIMATE FLOOR AREA
86.0 SQM / 925 SQFT



GROUND FLOOR



FIRST FLOOR



~~Boardwalk~~

Lyppiatt Road

REDFIELD, BRISTOL

£

£365,000

zzz

2 Bedrooms



BS5 9HW



1 Bathrooms

"Everything we want is on our doorstep. We can easily pop to the shops on Church road, get a coffee and a pastry in Loaf and walk the dogs in St George's park at lunch time. The garden is an absolute sun trap and we love sitting on the deck for a beer after work, barbecuing with friends and growing fruit and veg to snack on. We love the neighbourhood and community round here and aren't planning to move far!"

